

Digital Video Security

Comprehensive Video Security with Talon DVR!



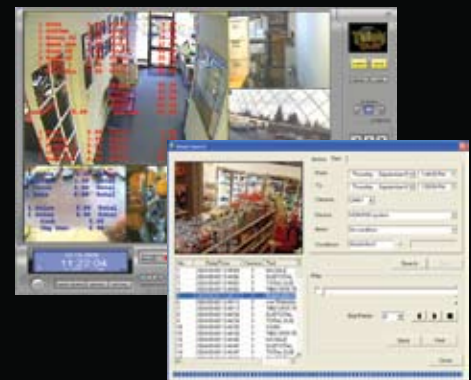
Talon Server Program Features

- 1,4,6,9,10,16,12 Multi Channel View Support
- Audio Monitoring and Recording
- Multiple Search Methods
- Pan, Tilt, Zoom & Focus Control Support
- Hardware Watchdog for Auto Reboot
- AVI / MPEG4 File Saving with Watermark
- Event Notification:
 - Beep, Mark, Pop-up, Talon-Net Remote Notify, Relay Output, E-Mail Message w/ Text & Image, Phone Message via Modem
- User Access Security
- TCP/IP Support for Remote Access
- Whole or Partial Image Motion Recording
- Image Masking Feature (LiveCap Only)

Talon-Net Client Program Features

- Multi Net DVR Central Station Support
- Remote Access to Multiple DVRs
- PTZ Control Including Preset and Tour Modes
- Image Controls for Brightness, Contrast, Hue, Resolution, Compression
- Display Live Video from Server
- Search Recorded Data by Time/Date, Motion, Text Match
- Save Remote Data Locally While Viewing
- Two-Way Voice Communication

Exceptional Clarity and Connectivity



POS Text Insertion

- Supports POS, ECR, Access Control & ATM
- Search by Text Match and Date / Time
- RS-232 / 422 / 485 and TCP/IP connectivity
- Up to 32 Devices per DVR Server
- Unique Parsing Utility for Custom Applications
- User-Defined Item Search Settings

Talon™ DVR Specifications

LivCAP / ACAP Features

- Up to 32 video input / 16 sensor in / 4 relay out (optional on ACAP)
- Up to 2 sound input (16 channels optional)
- Hardware Watchdog
- Multi-View TV Out (1, 4, Normal) (Single View only on ACAP)
- Real time display and record
- MPEG4 Soft CODEC Recording
- No Frame Loss
- High Resolution 352x240, 704x240, 704x480
- Pan / Tilt / Zoom Support (optional on ACAP)

MPG / AMX Features

- Up to 32 video input / 16 sensor in / 4 relay out (optional on AMX)
- Up to 32 integrated sound input
- Hardware Watchdog
- Single View TV Out
- Real time display and record (30fps / Chan)
- MPEG4 On-Board Hardware Processor
- No Frame Loss
- High Resolution 352x240, 704x240, 704x480
- Pan / Tilt / Zoom support (optional on AMX)
- Small recording frame size (1~3 KB / Frame)
- Low CPU Load

Direct Web Support

- Microsoft Internet Explorer Support
- No Special Software Required
- OCX Support
- View Live and Recorded Images
- Multiple Search Methods: Date/Time, Motion, Text, Single & Multi
- Audio Search
- 2-Way Voice Communication
- Image Saving: AVI Clip or JPEG Still



| MODEL | RECORD FRAMES | VIEW FRAMES | VIDEO CHANNELS | AUDIO CHANNELS | TV-Out CHANNELS | SENSOR INPUTS | RELAY OUTPUTS | PTZ Control |
|--|---------------|-------------|----------------|----------------|-----------------|---------------|---------------|-------------|
| Talon DVR ACap (Software Compression / Entry Level) | | | | | | | | |
| 120A16 | 120 | 120 | 16 | 2 | 1 | 16 (opt) | 4 (opt) | (opt) |
| Talon DVR LivCap (Software Compression) | | | | | | | | |
| 120N16 | 120 | 120 | 16 | 2 | 1 - 16 | 16 | 4 | Yes |
| 240N16 | 240 | 240 | 16 | 2 | 1 - 16 | 16 | 4 | Yes |
| 12016LIV | 120 | 480 | 16 | 2 | 1 - 16 | 16 | 4 | Yes |
| 24016LIV | 240 | 480 | 16 | 2 | 1 - 16 | 16 | 4 | Yes |
| Talon DVR LivCap 32 (Software Compression) | | | | | | | | |
| 240N32 | 240 | 240 | 32 | 2 | 1 - 32 | 16 | 4 | Yes |
| 480N32 | 480 | 480 | 32 | 2 | 1 - 32 | 16 | 4 | Yes |
| Talon DVR MPG (Hardware Compression) | | | | | | | | |
| MPG12004 | 120 | 120 | 4 | 4 | 1 | 4 | 4 | Yes |
| MPG24008 | 240 | 240 | 8 | 8 | 1 | 8 | 4 | Yes |
| MPG48016 | 480 | 480 | 16 | 16 | 1 | 16 | 8 | Yes |
| Talon DVR MPG AMX (Hardware Compression) | | | | | | | | |
| AMX48016 | 480 | 480 | 16 | 16 | 1 | 16 (opt) | 8 (opt) | (opt) |
| AMX96032 | 960 | 960 | 32 | 32 | 1 | 32 (opt) | 8 (opt) | (opt) |

PDA Support

- Windows CE, Windows Mobile support
- Wireless access to DVR
- Live view & search over cellular phone internet connection

